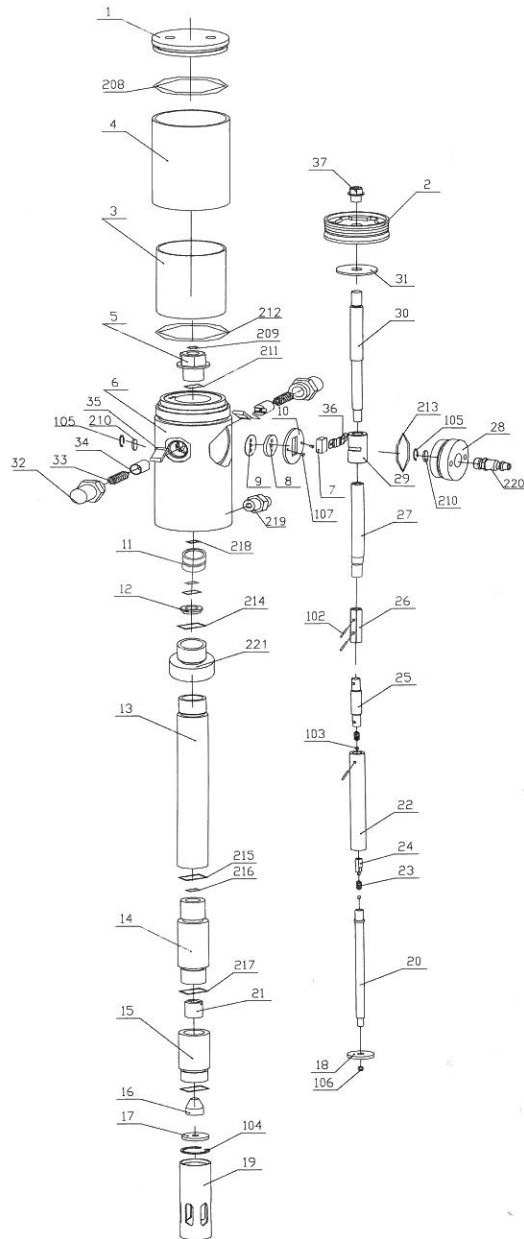


50:1 SERIES GREASE PUMP EXPLODED VIEW



50:1 SERIES GREASE PUMP PART LIST

Code	Name	Quantity
1	Air motor cover	1
2	Piston	1
3	Air motor shell inside	1
4	Air motor shell outside	1
5	Bracket	1
6	Air control center	1
7	Slider	1
8	Gasket	1
9	Soft gasket	1
10	Securing washer	1
11	Bracket	1
12	Washer	1
13	Connect tube	1
14	Piston shell	1
15	Valve seat	1
16	Taper washer	1
17	Filter	1
18	Shovel washer	1
19	Suction tube	1
20	Shovel rod	1
21	Valve	1
22	Piston	1
23	Spring	2
24	Spring seat	1
25	Connect shaft	1
26	Connect shell	1
27	Middle shaft	1
28	Air center cover	1

Code	Name	Quantity
29	Slider shell	1
30	Piston shaft	1
31	Washer	2
32	Spring shell	2
33	Spring	2
34	Spring Seat	2
35	Trip shoe guide	2
36	Press piece	1
37	Nut	1
102	Pin	3
103	Ball	2
104	Circlip	1
105	Small circlip	2
106	Nut	1
107	Screw	2
208	O-ring	2
209	O-ring	2
210	Silencer	2
211	O-ring	1
212	O-ring	1
213	O-ring	1
214	O-ring	1
215	O-ring	1
216	O-ring	1
217	O-ring	1
218	OD-ring	2
219	Outlet	1
220	Quick coupling	1
221	Connector	1

Troubleshooting

Problem	Possible Causes	Solutions
The pump continues to operate after the gun trigger has been released	1. Grease missing around the suction filter 2. There is a grease leak at some point of the circuit 3. Valve (part No. 15) closes incorrectly due to dirt or wearing.	1. Remove cover and take out pump and follower plate. Compact grease and fill the drum or substitute it for a full one. 2. Check and tighten unions. Repair the leak. 3. Disassemble and clean valves. Substitute them if danged
Reduction of the greasedelivery. Or reduced pressure in the grease delivery.	1. Airbags in the grease drum 2. Silencer(210) dirtied 3. Blocked at somepoint of the grease circuit 4. Ball valve (103) closes incorrectly due to dirt or wearing. 5. Damaged O-ring(216)	1. Remove the cover and take out the pump and the follower plate . Compact the grease and fill the drum 2. Clean or recharge silencer 3. Use clean grease 4. Substitute damaged elements
Air loss through the air exhaust	1. The sliding valve(7) does not close properly 2. The press piece(36) broken 3. Damaged O-ring(208, 209 or 211) 4. Damaged piston (2) 5. Damaged washer(31) 6. Broken spring(33)	1. Disassemble and clean. Substitute them if damaged 2. Substitute damaged elements
Grease leaks through the air exhaust	Seal set (11) damaged	Substitute damaged elements

If the pump has anything wrong, please contact dealer or their technical supporter. We don't recommend customer repair the pump themselves.